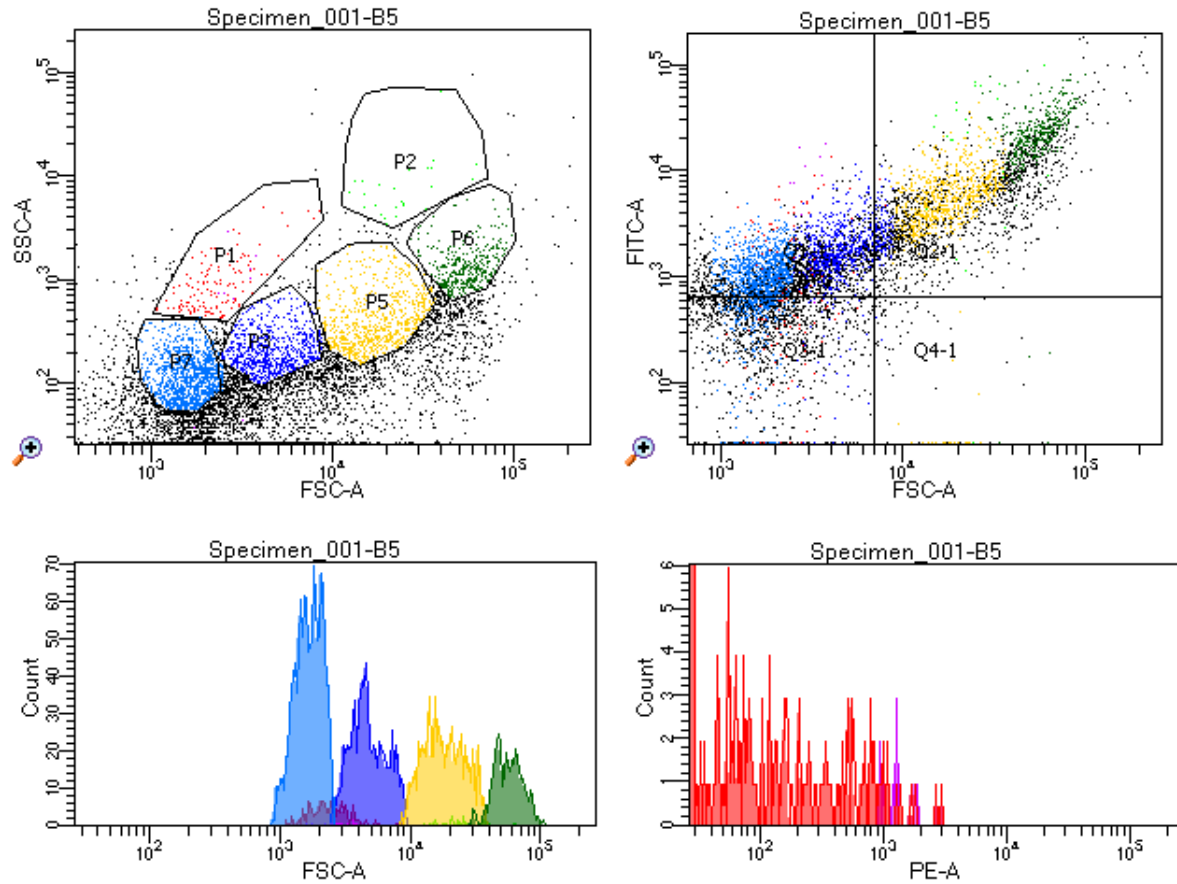


# BD FACSDiva 8.0.2



Well: B5			
Population	#Events	%Parent	%Total
■ All Events	7,305	####	100.0
■ P1	143	2.0	2.0
■ P2	26	0.4	0.4
■ P3	745	10.2	10.2
■ P4	12	0.2	0.2
☒ Q1-1	3,122	42.7	42.7
☒ Q2-1	2,501	34.2	34.2
☒ Q3-1	1,596	21.8	21.8
☒ Q4-1	86	1.2	1.2
☒ Q1-2	37	0.5	0.5
☒ Q2-2	1,708	23.4	23.4
☒ Q3-2	4,745	65.0	65.0
☒ Q4-2	815	11.2	11.2
☒ Q1-3	3,505	48.0	48.0
☒ Q2-3	2,698	36.9	36.9
☒ Q3-3	1,054	14.4	14.4
☒ Q4-3	48	0.7	0.7
■ P5	724	9.9	9.9
■ P6	362	5.0	5.0
■ P7	1,140	15.6	15.6

# BD FACSDiva 8.0.2

